

The price of quality is as low as we can make it

- High quality display and sign fittings optimised for the trade
- Advanced aluminium component technology combining lightness with strength
- Superb new etched satin component finish
- Manufactured to ISO 9001-9008 quality standard

**WALL MOUNT
 6MM PANEL GRIP**
 Code: 1022 ES
 Side grip for up to 6mm panel.

\$6.00

**WALL MOUNT
 3MM PANEL GRIP**
 Code: 1020 ES
 Side grip for up to 3mm panel.

\$6.00

6MM PANEL GRIP
 Code: 1066 ES
 For up to 6mm panel.

\$4.00

**TWIN 6MM PANEL
 GRIP**
 Code: 1068 ES
 For up to 6mm panel.

\$6.00

**WALL TO WALL 1.5MM
 CABLE KIT**
 Code: 1005 ES
 Complete with 4 metres of cable, zing screws, tension spring and allen key.

\$20.00

6MM SHELF SUPPORT
 Code: 1010 ES
 For up to 6mm panel.
 Complete with nylon sp grub screw for up to 6mm shelf.

\$6.00

**TWIN 6MM SHELF
 SUPPORT**
 Code: 1026 ES
 For up to 6mm panel.
 Complete with nylon sp grub screw for up to 6mm shelf

\$7.00

3MM PANEL HANGING KIT
 Code: 1003 ES
 For up to 3mm panel. Complete with 2 metres of cable, unigrip, zing screw and allen key.

\$10.00

TWIN 3MM PANEL GRIP
 Code: 1012 ES
 For up to 3mm panel.

\$4.00

6MM PANEL HANGING KIT

Code: 1004 ES
 For up to 6mm panel. Complete with 2 metres of cable, unigrip, zing screws and allen key.

\$10.00

3MM PANEL GRIP
 Code: 1011 ES
 For up to 3mm panel.

\$3.00

SMALL SIGN STANDOFF

Code: 1023 ES
 14mm dia. x 20mm standoff. Panel thickness up to 10mm, panel requires a 10mm dia. hole.

\$4.00

**FLOOR TO CEILING
 1.5MM CABLE KIT**

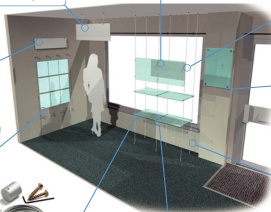
Code: 1000 ES
 Complete with 4 metres of cable, zing screws, tension spring and allen key.

\$15.00

LARGE SIGN STANDOFF

Code: 1024 ES
 25mm dia. x 20mm standoff. Panel thickness up to 10mm. Panel requires a 12mm dia. hole.

\$6.00



sample box

With prices this good and a product this stylish, you'll want to show your customers. elements trade can provide you with a branded or unbranded sample case.

Call for price

