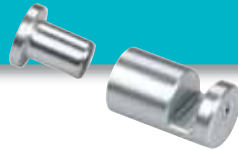


**Wall mounted side grip panel support**

For up to 3mm panel thickness.

Code: **6520**Size: **19mm ø with 25mm standoff**Finishes: **SA/BA/STA****Wall mounted side grip panel support**

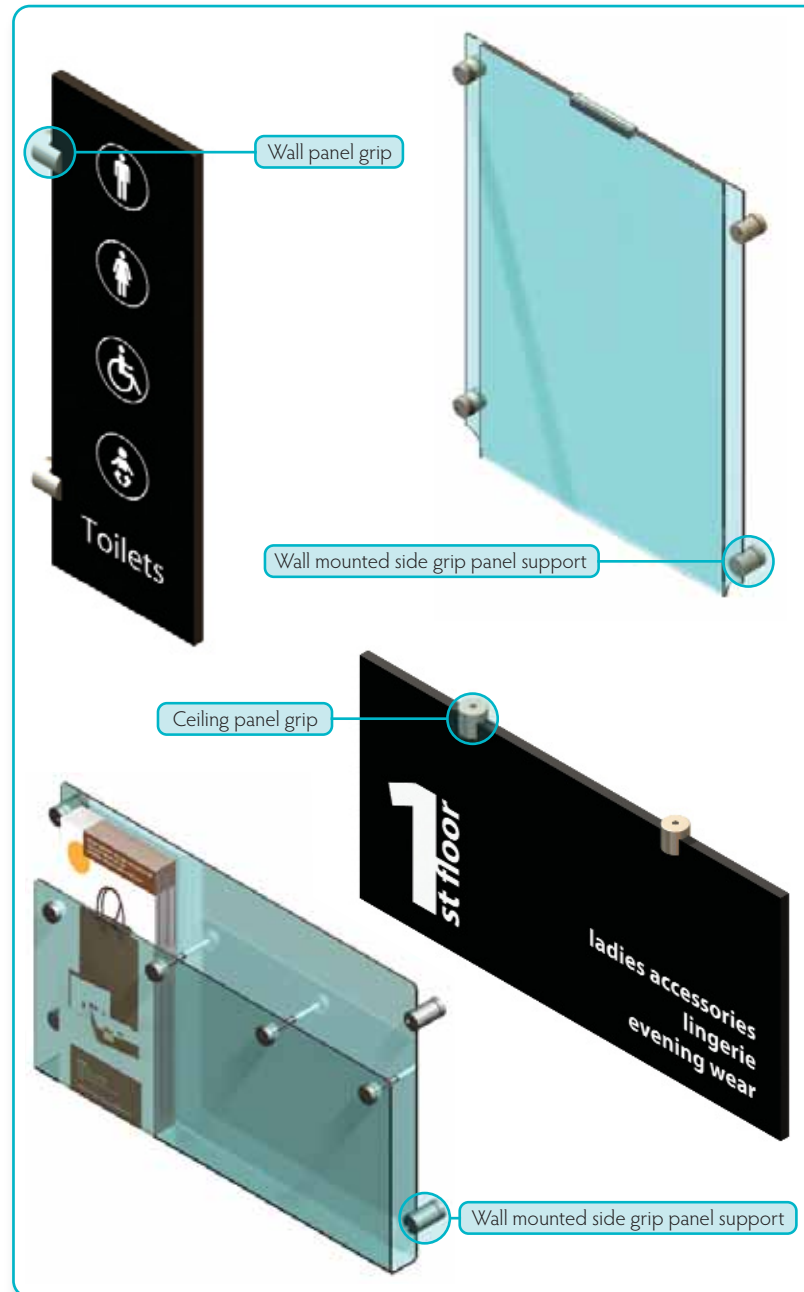
For up to 6mm panel thickness.

Code: **6522**Size: **19mm ø with 25mm standoff**Finishes: **SA/BA/STA****Wall mounted side grip panel support**

For up to 6mm panel thickness.

Code: **6529**Size: **30mm ø with 20mm standoff**Finishes: **SA/BA/STA****Wall mounted side grip panel support**

For up to 12mm panel thickness.

Code: **6530**Size: **30mm ø with 20mm standoff**Finishes: **SA/BA/STA****Wall/ceiling panel grip**

For up to 5mm panel thickness.

Code: **6535**Size: **12mm ø**Finishes: **SA/BA/STA****Wall/ceiling panel grip**

For up to 8mm panel thickness.

Supplied with nylon tipped screw.

Code: **6521**Size: **19mm ø**Finishes: **SA/BA/STA****Wall/ceiling panel grip**

For up to 12mm panel thickness.

Supplied with nylon tipped screw.

Code: **6526**Size: **25mm ø**Finishes: **SA/BA/STA****THE FINISHING TOUCH**

Most components pictured have a Silver Anodised finish, but many are available in any of the three finishes detailed below.

**SA (Silver Anodised)**

is a popular choice for many users, as it combines the practicality and versatility they require in constantly changing retail environments.

**BA (Brass Anodised)**

is usually chosen for traditional settings.

**STA (Stainless Steel Anodised)**

is increasingly the finish of choice for architects and interior designers. It could be said that stainless steel is 'the new black'.

When ordering, insert a forward slash after the code, followed by the finish code. e.g. 6011/SA.

**Silver anodised**  
Finish code **SA**



**Brass anodised**  
Finish code **BA**



**Stainless anodised**  
Finish code **STA**

