



Our innovative Easi-Fix sign system features unique Grip-Flex® technology, which holds up to 3mm Dibond, acrylic pockets and Foamex (2mm recommended), securely at any angle. The system works with vertical, horizontal or curved graphic formats and allows individual graphics to be changed quickly and easily. Choose from anodised or painted finishes.



HOW DOES IT WORK?

Use Easi Fix for mounting graphics on walls, ceilings, floors, or as a freestanding display. The system is available with one-, two- or four-way extrusions, as appropriate, in order to provide a high degree of versatility in any situation. Panels simply push into the extrusion and are held firmly in place by a hidden rubber seal, without the requirement for screws or other fixings.



One-way slimline: EF1

Suitable for hanging signs, projecting signs, wall mounted and floor to ceiling applications.

Code: **EF1**

Size: **18mm ø** Finishes: **SA**



One-way maxi: EF11

Suitable for flush wall mounted applications and freestanders.

Code: **EF11**

Size: **24mm ø** Finishes: **SA**



Two-way slimline: EF2

Suitable for floor to ceiling and projecting applications.

Code: **EF2**

Size: **18 x 30mm** Finishes: **SA**



Two-way maxi: EF22

Suitable for flush wall mounted applications and freestanders.

Code: **EF22**

Size: **34 x 24mm** Finishes: **SA**



Four-way slimline: EF4

Suitable for ceiling hung signs only.

Code: **EF4**

Size: **30 x 30mm** Finishes: **SA**



Four-way maxi: EF44

Suitable for freestanding displays. Inlays available.

Code: **EF44**

Size: **45 x 45mm** Finishes: **SA**

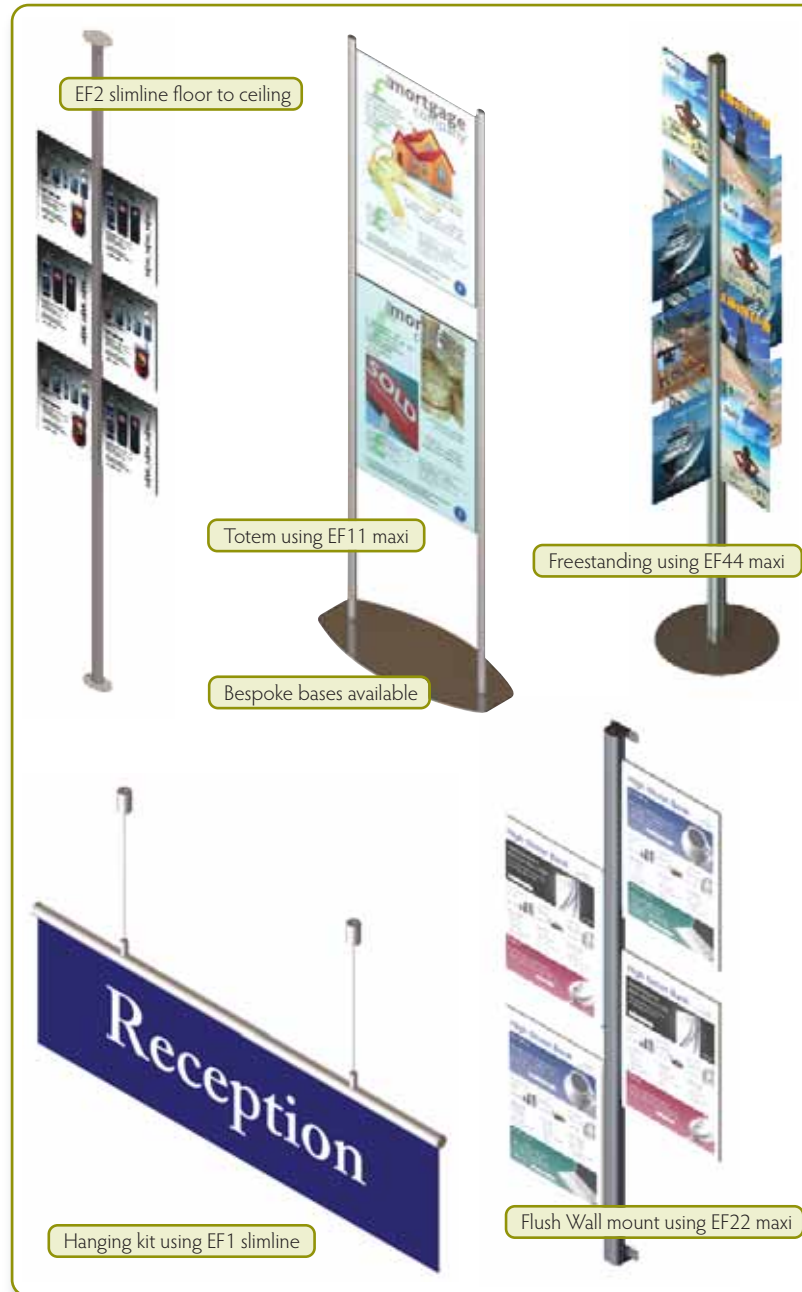


Inlay for EF44

Inserts into the hollows of the EF44 profile to create a 'rounded square'.

Powder coating available – contact sales.

Code: **EF44INSERT** Finishes: **SA**



Hanging kit

Pair of ceiling mounted. 2M drop. Suitable for use with EF1 and EF11. Pair supplied.

Code: **EF1-3**

Finishes: **SA**



One-way floor to ceiling fixing

Floor and ceiling fixing brackets sold as a kit. Suitable for EF1 extrusion.

Code: **EF1-6**

Finishes: **SA**



Wall mount for EF11 and EF22

Holds EF11 and EF22 extrusions flush to the wall. Sold as a pair.

Code: **EF11-2** (for EF11)

EF22-2 (for EF22)

Finishes: **Regal silver**



Acrylic pockets (Manufactured in 3mm PETG)

Left fix:

A3 Code: **EFLA3P** (portrait)

EFLA3L (landscape)

A4 Code: **EFLA4P** (portrait)

EFLA4L (landscape)

A5 Code: **EFLA5P** (portrait)

EFLA5L (landscape)

Right fix:

A3 Code: **EFRA3P** (portrait)

EFRA3L (landscape)

A4 Code: **EFRA4P** (portrait)

EFRA4L (landscape)

A5 Code: **EFRA5P** (portrait)

EFRA5L (landscape)

Centre fix:

A0 Code: **EFCA0P** (portrait)

A1 Code: **EFCA1P** (portrait)

EFCA1L (landscape)

A2 Code: **EFCA2P** (portrait)

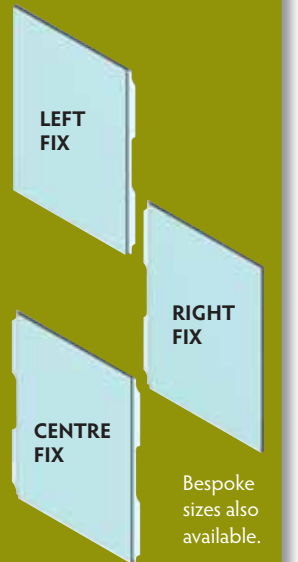
EFCA2L (landscape)

A3 Code: **EFCA3P** (portrait)

EFCA3L (landscape)

A4 Code: **EFCA4P** (portrait)

EFCA4L (landscape)



Bespoke sizes also available.

Don't forget, you will also need to order a pocket clamp (6119 - see acrylic fabrication 1).

BESPOKE LITERATURE HOLDERS, SHELVES, SHOE HOLDERS AND POSTER POCKETS AVAILABLE

Silver anodised 
Finish code **SA** 

Ceiling mount for EF4

Allows EF4 extrusion to be ceiling mounted.

Code: **EF4-8**

Size: **100 x 100mm**

Finishes: **Powder coated regal silver**



Endcaps

EF1-1
Aluminium



EF11-1
Aluminium



EF2-1
Acrylic



EF22-1
Acrylic



EF4-1
Acrylic



EF44-1
Acrylic



Round base for EF11

Heavy mild steel base, 350mm diameter.

Code: **EF11-5**

Finishes: **Powder coated regal silver**

Maximum height 1.8M



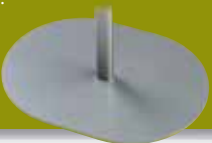
Oval base for EF22

Heavy mild steel base, 400 x 300mm.

Code: **EF22-5**

Finishes: **Powder coated regal silver**

Maximum height 1.8M



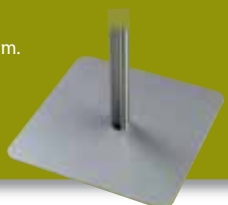
Square base for EF44

Heavy mild steel base, 350 x 350mm.

Code: **EF44-5**

Finishes: **Powder coated regal silver**

Maximum height 1.8M



Easi Fix standard frames

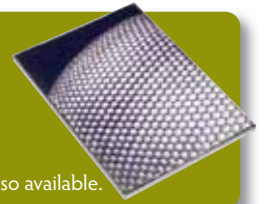
Code: **EFA4 (A4)**

Code: **EFA3 (A3)**

Code: **EFA2 (A2)**

Code: **EFA1 (A1)**

Code: **EFA0 (A0)** Bespoke sizes also available.



'Bus stop' mount for EF1

Bracket suitable for projecting signs using EF1.

Code: **EF1-2**

Finishes: **Regal silver**



'Bus stop' mount for EF2

Suitable for projecting and floor and ceiling applications using EF2.

Code: **EF2-2**

Finishes: **Regal silver**



Wall mount kit for EF1

Pair of wall mount components suitable for use with EF1 extrusion.

Code: **EF1-4**

Finishes: **SA**

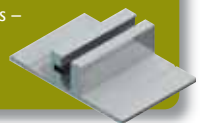


Easi Fix projection flag extrusion: EF3

Recommended with 6533/SA flush mounts – see Sign Connections page 1.

Code: **EF3**

Finishes: **SA**



Wall mount flexiboard system: EF7

Custom design your display. Choose the size you want and we'll supply acrylics, backboard (which can be printed) and mitre the corners – contact sales.

Code: **EF7** Finishes: **SA**



Key for removing graphics

Essential tool for safely removing panels from all the extrusions. For use with all pockets and panels.

Code: **EFK**



Silver anodised 
Finish code SA 

TIP: GIVE YOUR SCREW FIXINGS A PROFESSIONAL FINISH WITH 6533/SA FLUSH MOUNTS